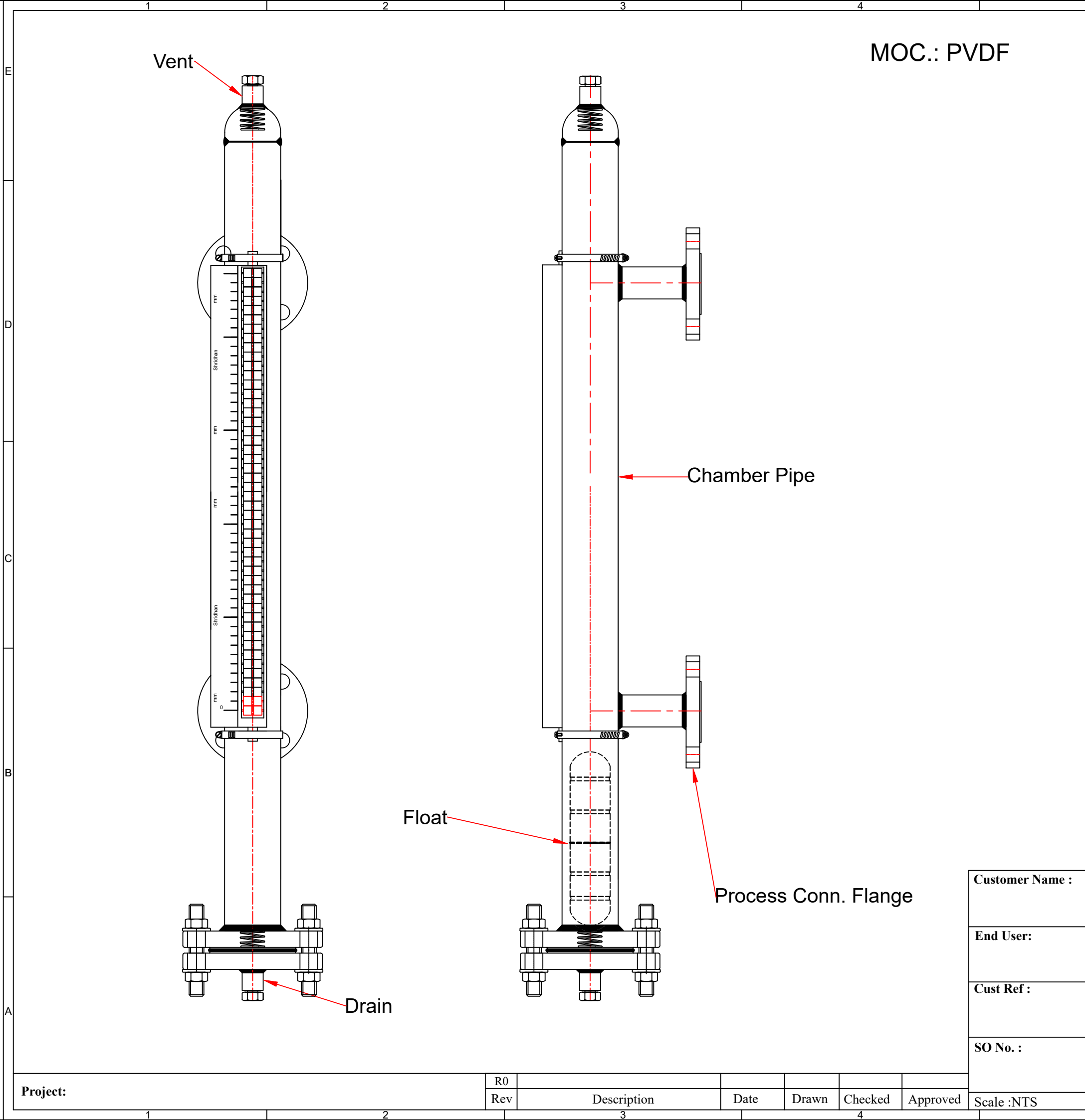



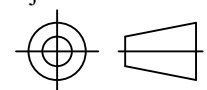
This document is the exclusive property of SHRIDHAN INDIA and contains confidential information. This document or its contents shall not be used, reproduced or disclosed in whole or in part, without prior written permission of SHRIDHAN INDIA. This document and all its copies shall be returned to SHRIDHAN INDIA on demand.



MOC.: PVDF

Process Connection Flanged		Process Connection Threaded		
SI No.	Type	SI No.	Type	
1	1/2" (#150 to #2500)	1	1/2" NPT	
2	3/4" (#150 to #2500)	2	1/2" BSP	
3	1" (#150 to #2500)	3	3/4" NPT	
4	1 1/2" (#150 to #2500)	4	3/4" BSP	
5	2" (#150 to #2500)	5	1" NPT	
6	3" (#150 to #2500)	6	1" BSP	
Vent/Drain Flanged		Vent/Drain Plugged		
SI No.	Type	SI No.	Size	Type
1	1/2" (#150 to #2500)	1	1/2"	BSP/NPT Plug
2	3/4" (#150 to #2500)	2	3/4"	BSP/NPT Plug
3	1" (#150 to #2500)	3	1"	BSP/NPT Plug
4	1 1/2" (#150 to #2500)	4	1 1/2"	BSP/NPT Plug
5	2" (#150 to #2500)	5	2"	BSP/NPT Plug
Chamber Pipe		Vent/Drain Valve		
SI No.	Size	SI No.	Size	Type
1	2"(Sch.10 to Sch.160)	1	1/2"	Threaded,SW,SW with Flange, Flanged Valve
2	2 1/2"(Sch.10 to Sch.160)	2	3/4"	Threaded,SW,SW with Flange, Flanged Valve
3	3"(Sch.10 to Sch.160)	3	1"	Threaded,SW,SW with Flange, Flanged Valve
4	4"(Sch.10 to Sch.160)	4	1 1/2"	Threaded,SW,SW with Flange, Flanged Valve
		5	2"	Threaded,SW,SW with Flange, Flanged Valve

**NOTE:**  
For any other variants contact factory.

Customer Name :			
End User:			
Cust Ref :	Drawing No. :	Rev No. : 00	Projection : 
SO No. :	All Dimensions in mm		Sheet 1 of 1
Scale : NTS	Title & Model No. Magnetic Level Indicator		

Project:	R0	Description	Date	Drawn	Checked	Approved
	Rev					